

DOWNTOWN WHEATON BOUTIQUE OFFICE

101 S. Cross Street
Wheaton, IL

Site area: .21 Acres
Parking spaces: 12

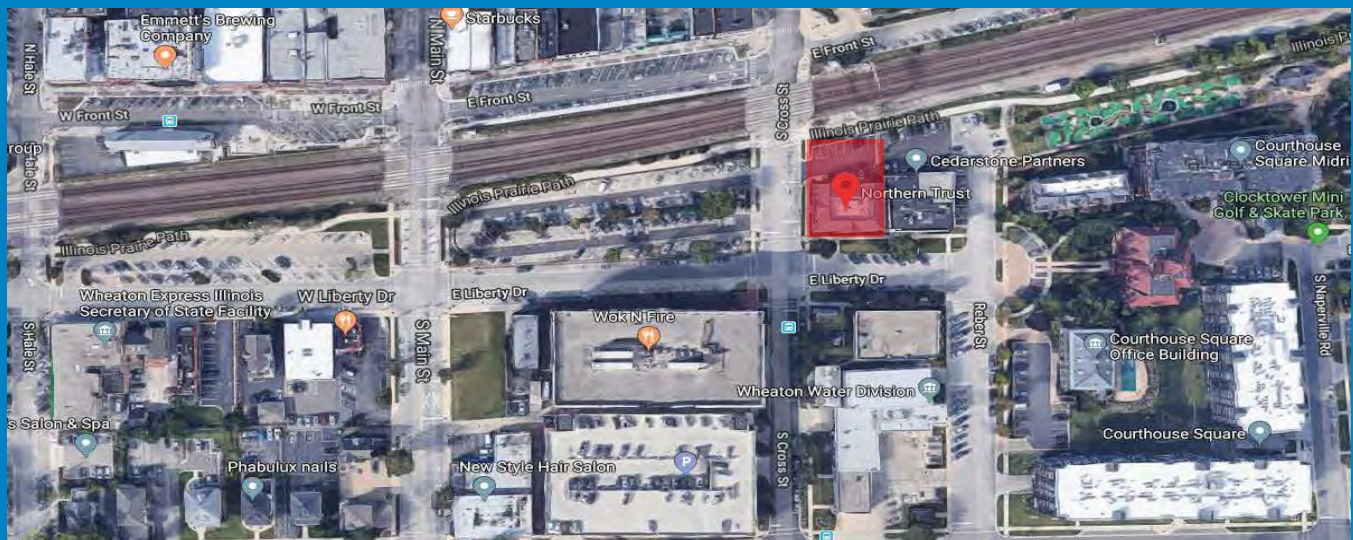


Highly Improved Boutique Office Building Located in the heart of Downtown Wheaton, IL

- Former Wealth Management Office with High End Finishes Throughout
- 8,544 Sq. Ft. with elevator and partial basement
- Ideal location for Wealth Management, Investment Services or Healthcare
- Can be demised to 4,272 SF per floor
- Neighboring businesses include: First Trust, DuPage Medical and Wheaton Healthcare
- Rare off-street, dedicated parking for 12 cars
- Excellent visibility / signage from Cross Street and Metra Union Pacific West Line

Building Size: 8,544 Sq. Ft.

Contact:
Charles S. Margosian
Charles S. Margosian Jr.
630-691-1122



HIGHLAND MANAGEMENT ASSOCIATES, INC.
1 East 22nd Street, Suite 201 • Lombard, Illinois 60148